



# CONDITION SURVEY

Panama

# CONDITION SURVEY

KMS has performed Condition inspection on Container ships, General cargo and Heavylift Ships, Bulk Carriers, Oil and Chemical Tankers, LNG Tankers, Cruise ships and Offshore Support vessels.

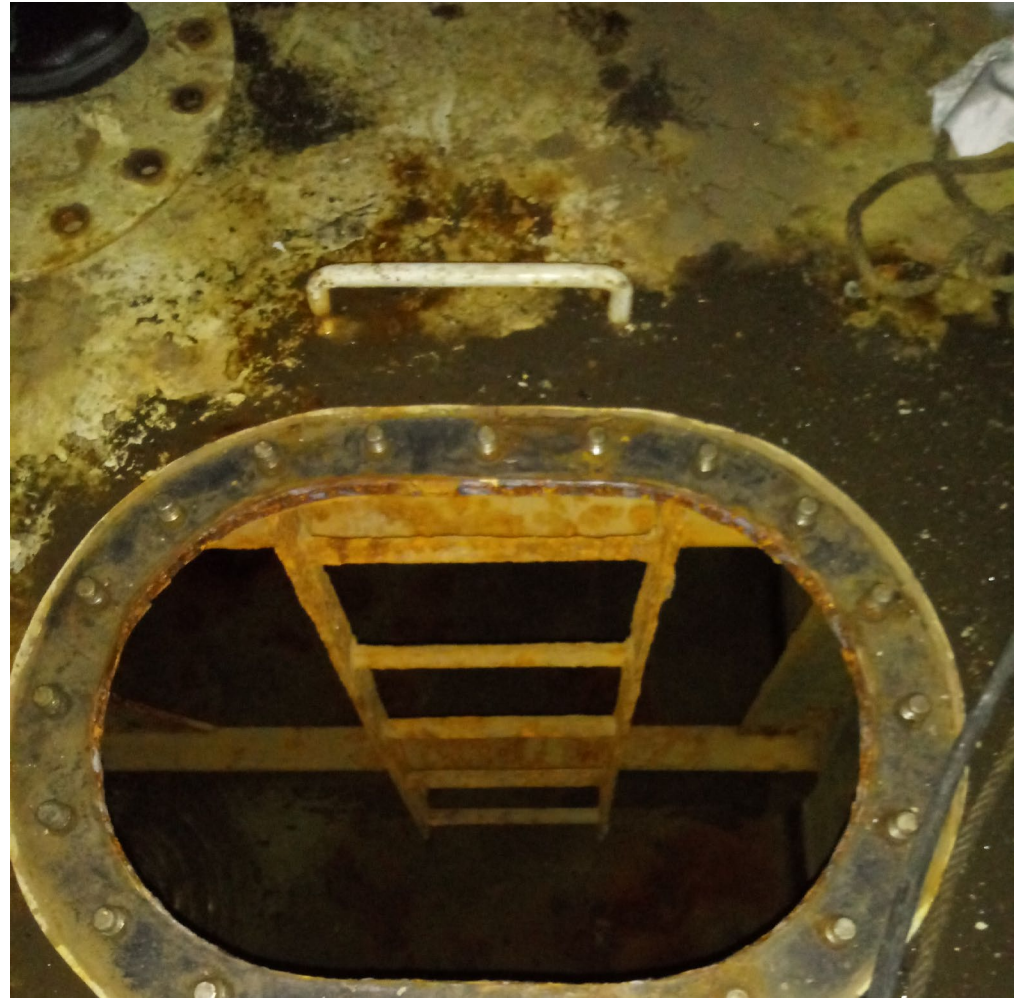
KMS can provide checklist/report format or use client provided formats. We can also work in the Safetyculture (iAuditor) system.



# CONDITION SURVEY

A KMS Condition inspection include all accessible spaces of the vessel and observation of test or operation of important equipment if the operations allow this, Emergency Steering gear, Emergency Generator, Emergency Fire Pump, Life boat/Rescue boat Engines, Radars, ECDIS, Echo sounder, VDR, Communication Equipment, Main Machinery, and Operational equipment.

We will normally arrange in advance with the Vessel to have 3-4 Ballast tank opened, ventilated and atmosphere tested for safe entry for inspection. We aim to take between 300 to 1000 photographs according to the clients instructions.



## Licensed

KMS is licensed by the Panama Maritime Authority to carry out ship's inspections in the territory of the Republic of Panama.



**AUTORIDAD MARÍTIMA DE  
PANAMÁ**

# IIMS Membership

KMS is a member of the International Institute of Marine Surveying.



# Ultrasonic Hatch Testing

KMS has available the ABS Class approved Ultrasonic hatch leak detector.



**Contacts:**

**Email: [info@krolmarkmarine.com](mailto:info@krolmarkmarine.com)**

**Tel (+507) 786-6928**

**Mob. (+507) 69067960 (24 Hr)**

**Office:**

**Plaza Las Americas**

**2nd Level office 15,**

**David, Chiriqui,**

**Panama**

